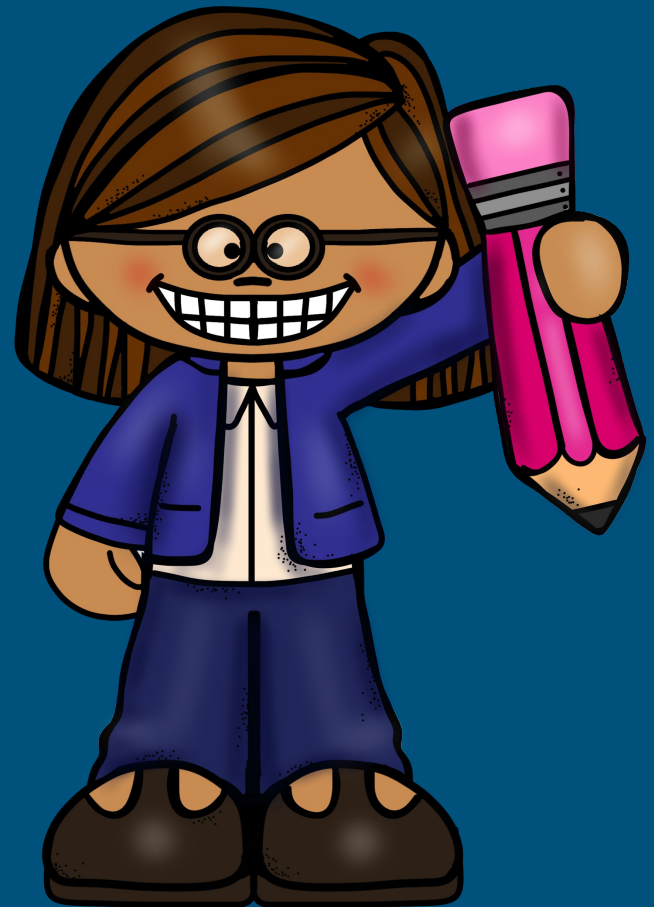


# WELCOME TO 2ND GRADE!!



# Teacher Ease

- This is an online gradebook accessible to parents.
  - Parents will be able to monitor their child's progress by logging in with their SIS login.
  - This gradebook will report on a 4, 3, 2, 1 scale.
  - [TeacherEase Tutorial Videos for Parents](#) (Click to view folder)



# Pathways To Reading

- Pathways To Reading provides instruction in phonics, phonemic awareness, and fluency through large and small group instruction.
- After students graduate out of Pathways to Reading, they will be in guided reading groups.
- Sight words will be assessed quarterly.



# Science/Social Studies

The students will have opportunities to participate in hands on and cooperative learning experiences that engage their minds. Some topics covered throughout the year are: Citizenship, Geography, Economics, Matter, Earth's Systems, and Ecosystems.



# Eureka Math

Ray-Pec has adopted the Eureka Math Curriculum. Eureka gives teachers the tools to take their students beyond rote memorization to give them a deeper and more complete understanding of the subject matter.

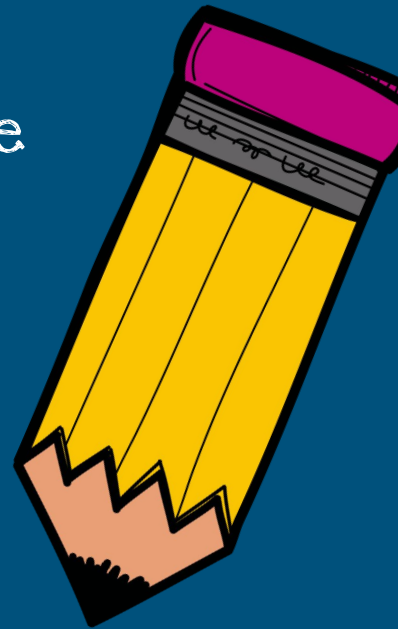
With each new topic, a parent tip sheet will be sent home to help you with the vocabulary and skills we are practicing.





# Newsletters

- The link to our newsletter will be emailed to you every week.
- Please make sure to read it for important dates and information.
- New spelling words will also be listed for the upcoming week.



# Practice Work in 2nd Grade!!!



- Your child should be reading for at least 20 minutes each night. We will be sending a reading log home to track your child's reading starting in October.
- Check your child's folder each Monday. We will be sending home a Spelling page to practice their weekly words and sentences. You will also communicate transportation changes here.
- Practice math addition and subtraction facts through 20 continually throughout the year.